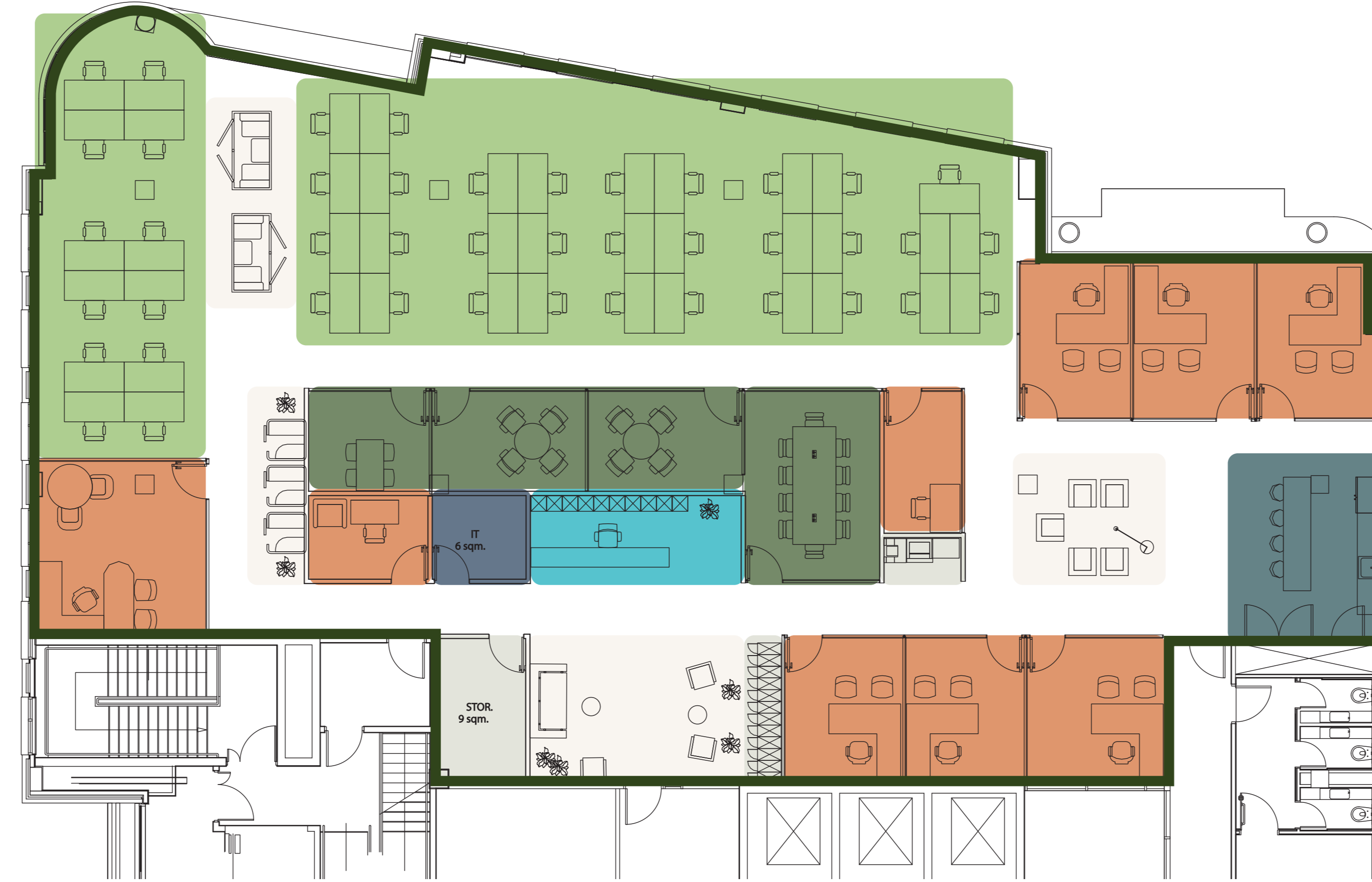


# north floorplate

## HIGH DENSITY FLOORPLAN



- OPEN PLAN OFFICE
- PRIVATE OFFICE
- MEETING ROOMS
- RECEPTION
- TEA POINTS
- AMENITIES
- BREAKOUT SPACE
- IT ROOM

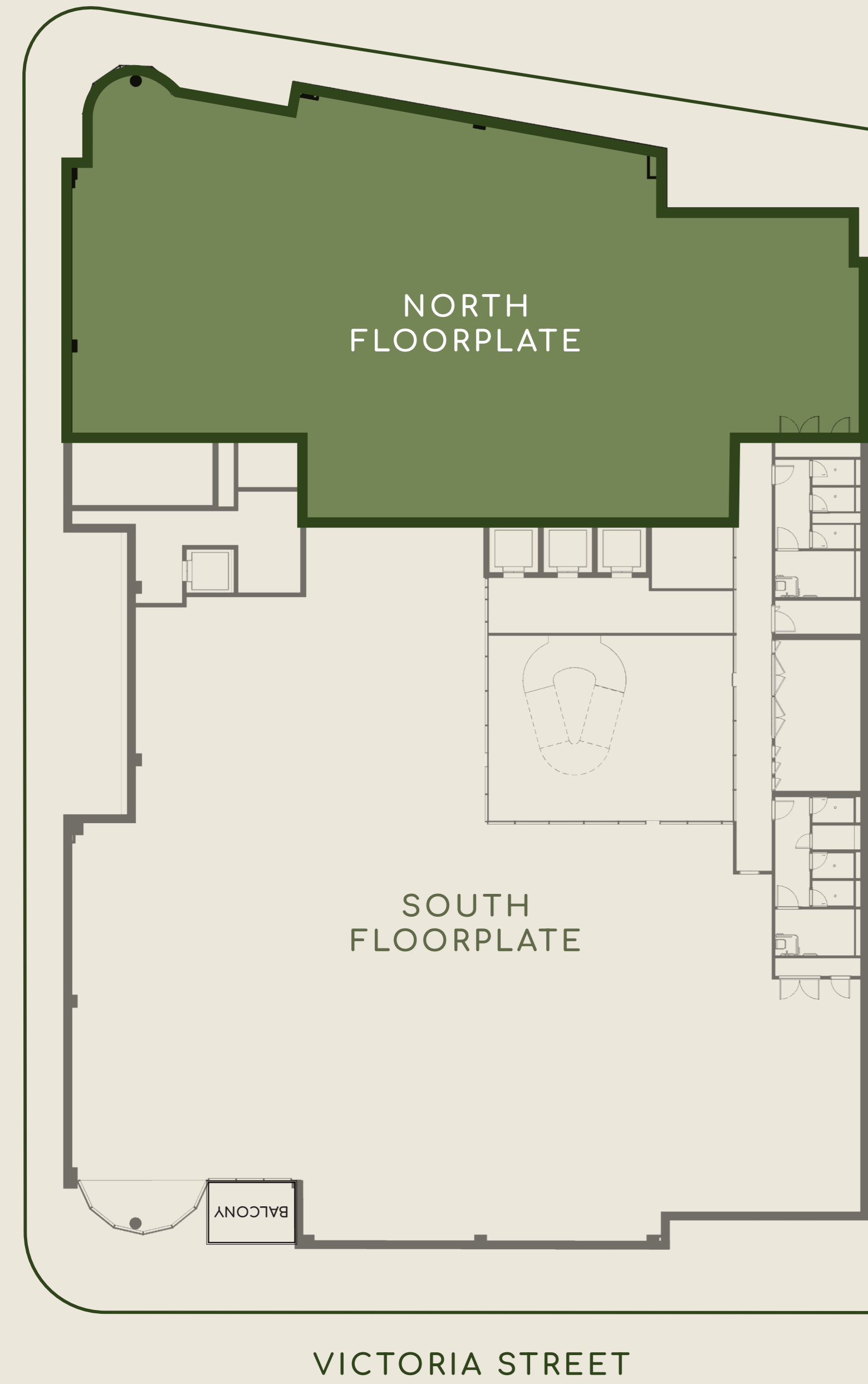
- OVERALL SPACE **5,600 SQ FT**
- MEETING ROOMS **4**
- DENSITY SQ FT/PERSON **107.69**
- OFFICES **9**
- OPEN SPACE **43**
- OVERALL SEATS **52**

## LOW DENSITY FLOORPLAN



- OPEN PLAN OFFICE
- PRIVATE OFFICE
- MEETING ROOMS
- RECEPTION
- TEA POINTS
- AMENITIES
- BREAKOUT SPACE
- IT ROOM

- OVERALL SPACE **5,600 SQ FT**
- MEETING ROOMS **5**
- DENSITY SQ FT/PERSON **136.59**
- OFFICES **8**
- OPEN SPACE **33**
- OVERALL SEATS **41**



Scan the QR code for a 3D walk-through of the space

**KERR** Space planning by  
Kerr Office Group

6 Glenmore Business Park  
Swindon, SN5 7FP

01793 611 900  
sales@koguk.com

## HIGH DENSITY FLOORPLAN



- OPEN PLAN OFFICE
- PRIVATE OFFICE
- MEETING ROOMS
- RECEPTION
- TEA POINTS
- AMENITIES
- BREAKOUT SPACE
- IT ROOM

OVERALL SPACE  
**7,715 SQ FT**

MEETING ROOMS  
**4**

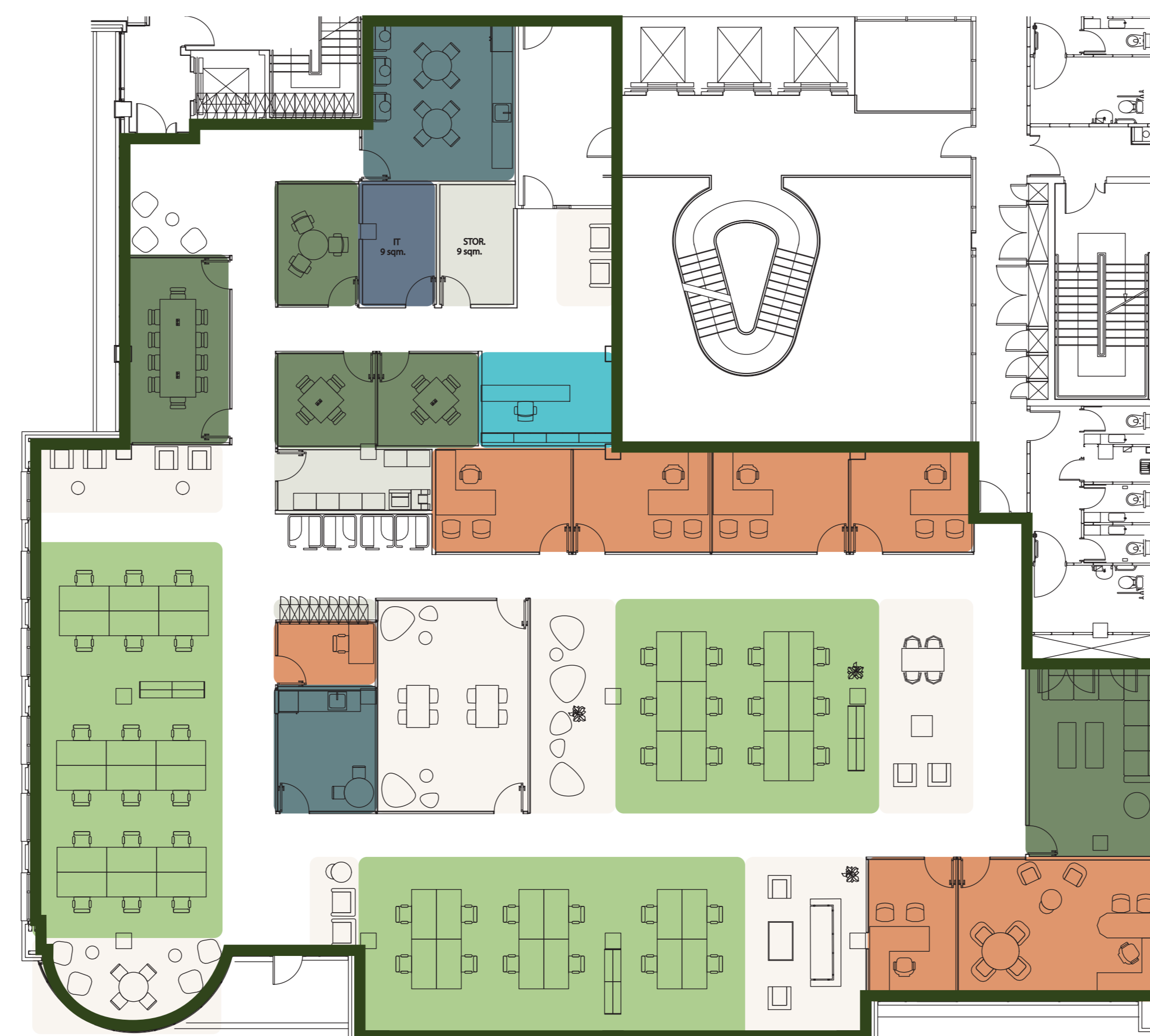
DENSITY  
SQ FT/PERSON  
**98.9**

OFFICES  
**8**

OPEN SPACE  
**70**

OVERALL SEATS  
**78**

## LOW DENSITY FLOORPLAN



- OPEN PLAN OFFICE
- PRIVATE OFFICE
- MEETING ROOMS
- RECEPTION
- TEA POINTS
- AMENITIES
- BREAKOUT SPACE
- IT ROOM

OVERALL SPACE  
**7,715 SQ FT**

MEETING ROOMS  
**5**

DENSITY  
SQ FT/PERSON  
**157.45**

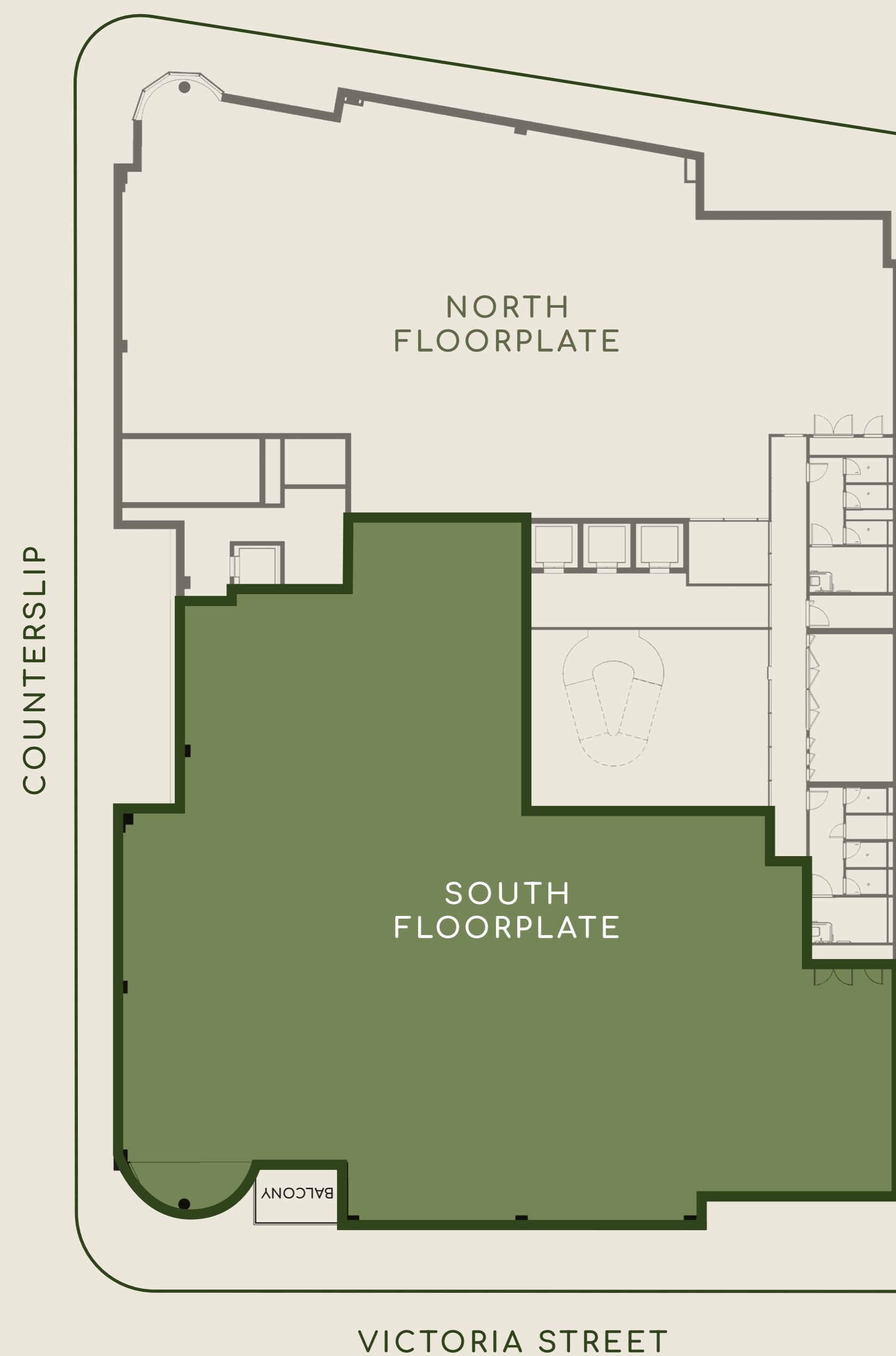
OFFICES  
**7**

OPEN SPACE  
**42**

OVERALL SEATS  
**49**

# south floorplate

The floorplate can be split to provide flexible workspace and accommodate different requirements.

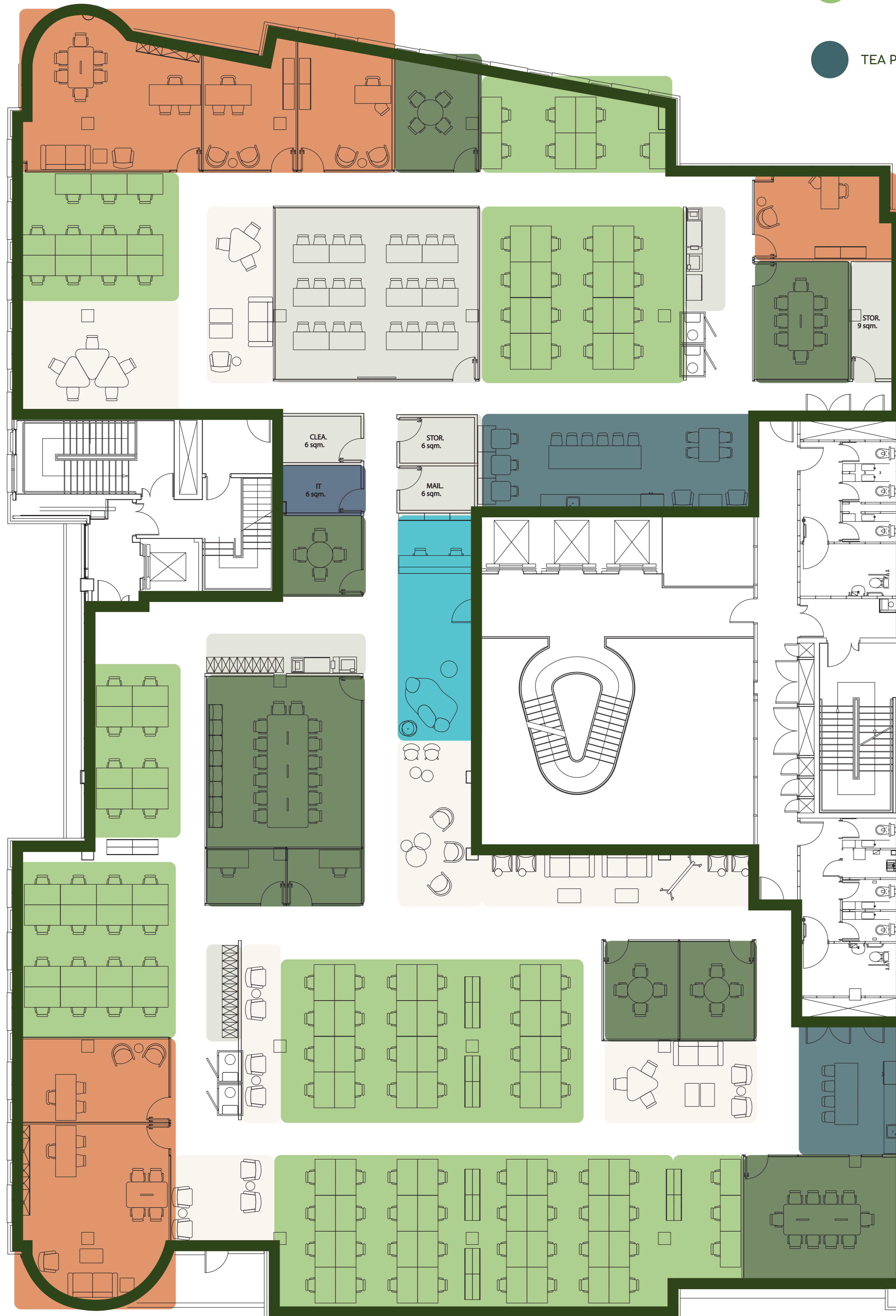


COUNTERSLIP

VICTORIA STREET

# HIGH DENSITY FLOORPLAN

- OPEN PLAN OFFICE
- PRIVATE OFFICE
- MEETING ROOMS
- RECEPTION
- TEA POINTS
- AMENITIES
- BREAKOUT SPACE
- IT ROOM

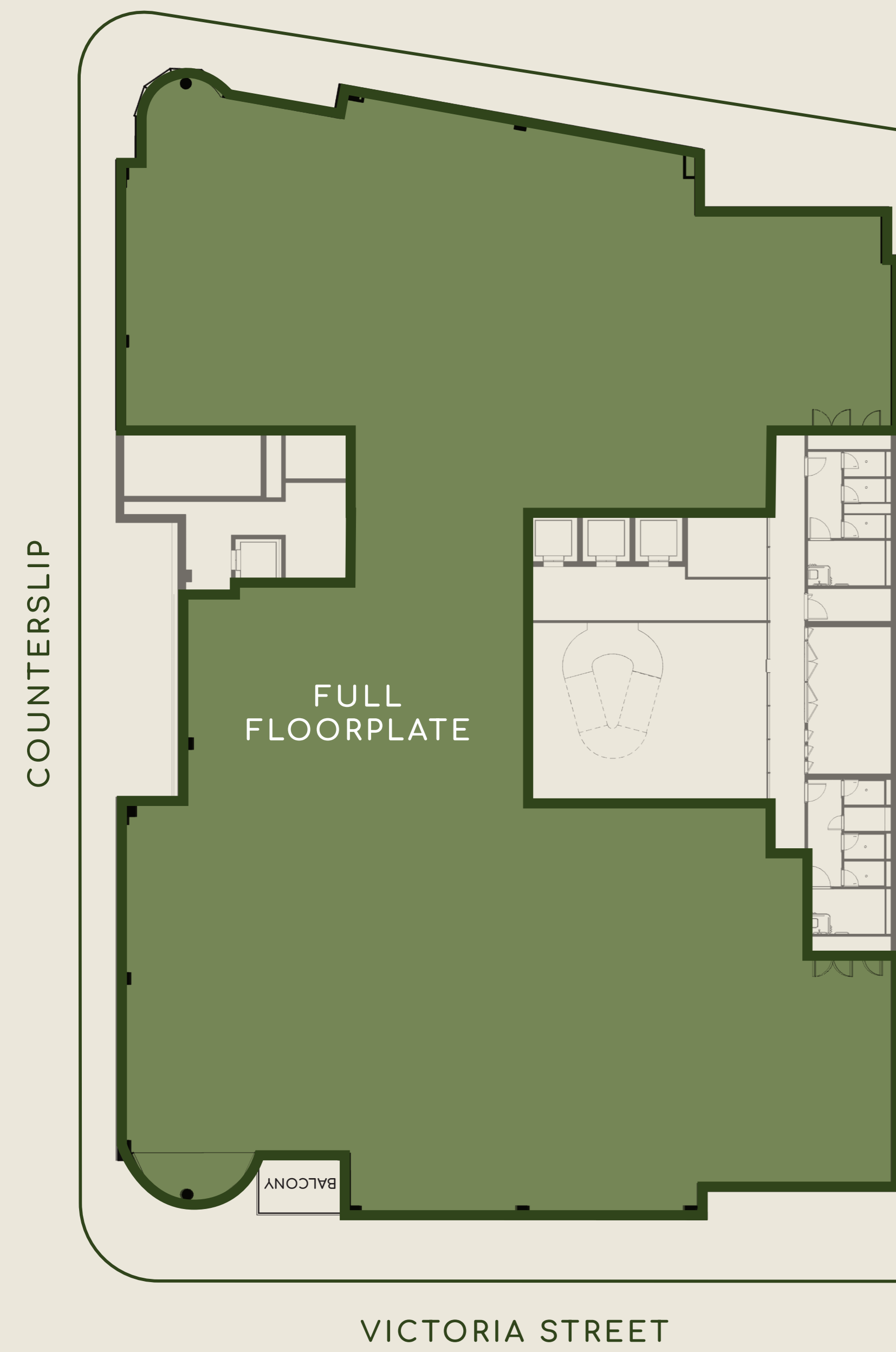


- OVERALL SPACE  
**13,328 SQ FT**
- MEETING ROOMS  
**9**
- DENSITY  
SQ FT/PERSON  
**108.35**
- OFFICES  
**6**
- OPEN SPACE  
**117**
- OVERALL SEATS  
**123**

Scan the QR code for a 3D walk-through of the space

full floorplate

The fourth floor presents spacious and open plan office accommodation, providing a modern work space.



VICTORIA STREET